

# unitech systems

inspiring|solutions



**Unitech Systems** is a fast growing company which designs and manufactures mounts and mechanisms for all kind of AV applications. Unitech Systems' main focus is on facilitating and optimizing the use of audiovisual equipment, with high quality products. Driven from that, we constantly improve and evolve our range to meet the needs and the facts of the new age.

The **mission** of **Unitech Systems** is to cover the needs in the market of Audiovisual (residential and professional) with products and solutions that optimize use of audiovisual equipment, while improving the aesthetics of the home or office environment and supporting their installation.

In **Unitech Systems** we are deeply committed in helping, professional (designer / seller / installer) - final customer relation in such a way that they are both satisfied, by giving solutions to customers' requests and facilitating professionals' sale or installation.

Some of Unitech Systems' strong points are:

- ✓ High quality products with good value for money ratio
- ✓ Globally unique products, with excellent specifications and high utility
- ✓ Complete and constantly expanding range of flat panel floor stands for all kind of professional or residential applications
- ✓ Specialization in mechanisms for ceiling, wall/furniture or table/floor applications for all kind of AV equipment
- ✓ Customization of products according to client needs

**Unitech Systems'** mission is to be established in its clients' conscience as synonymous to:  
**innovation, utility, reliability & partnership!**

## Unitech Systems' Product Range

### Products for projectors

#### ✓ Projector Lifts (PL)

- projector ceiling lifts (PLC)
- projector wall lifts (PLW)
- projector table/floor lifts (PLT / PLF)

#### ✓ Projector Mounts (PM)

- projector ceiling mounts (PCM)
- projector wall mounts (PWM)
- projector floor mounts (PFM / PTM)
- RPS systems (RPS)

### Products for flat panels

#### ✓ Flat Panel Lifts (FPL)

- flat panel ceiling lifts (FPLC)
- flat panel wall lifts (FPLW)
- flat panel table/floor lifts (FPLT / FPLF)
- flat panel ART cover mechanisms (FPART)

### Products for flat panels

#### ✓ Flat Panel Mounts (FPM)

- flat panel ceiling mounts(FPCM)
- flat panel wall mounts (FPWM)
- flat panel table mounts (FPTM)
- flat panel floor stands (FPFS)
- flat panel round wall mounts (FPRM)
- flat panel outdoor customized stands and boxes (FPOB)
- flat panel infokiosk stands and mounts (INF)
- flat panel video wall mounts (e.g.: FPW- H2V2)
- for wall suspension (e.g.: FPW-H2V2-W)
- for floor standing (e.g.: FPW-H2V2-FS)
- for ceiling suspension (e.g.: FPW-H2V2-C)

#### ✓ Flat Panel Ceiling Rail mechanism (FPCRMV4)

- manual systems (LMM)
- electric motion systems (LME)

#### ✓ Panel mechanisms (PA-)

- horizontal motion (sliding)
- horizontal motion (extension)
- vertical motion (up or down)
- combination of motions

### Special Rack systems

- Anti-Vibration racks and accessories
- Linear Rack systems
- Rotating racks
- Special racks

### Camera Products

- camera mounts for ceiling, wall or other apps (CM)
- camera lift (VCL)
- camera floor stands (VCFS)

### Connection Panel & Boxes

- Customized Housings
- Customized Motorized Solutions
- Screen Mechanisms

# Contents

## Products for projectors

### projector mechanisms

page 4-7

- projector ceiling lifts page 4-5
- projector wall & furniture lifts page 6
- projector hydraulic lifts page 7

## Products for flat panels

### flat panel mechanisms

page 8-27

- flat panel art cover mechanisms page 8
- panel vertical lifts page 9
- flat panel rail mechanisms page 10-11
- flat panel ceiling lifts page 12-18
- flat panel vertical wall/ceiling lifts page 19
- flat panel extension mechanism page 20-21
- flat panel table/furniture lifts page 22-27

### flat panel mounts

page 28-34

- flat panel rotating wall mounts page 20-31
- flat panel rotating ceiling & table mounts page 32
- flat panel floor stands, totems, infokiosk page 33-34

## Other products

### camera ceiling & wall lifts

page 35

### anti-vibration 19" racks

page 36

### socket lifts & panel-boxes

page 37

### customized products

page 38



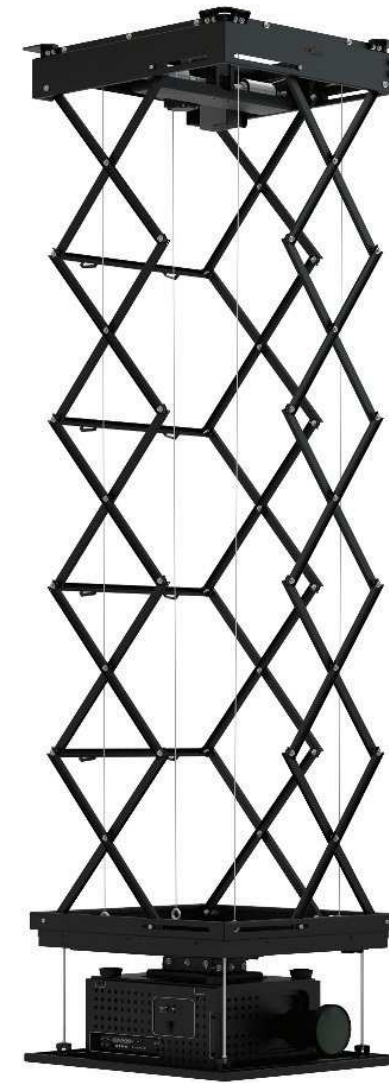
## Projector Ceiling Lifts

Unitech Systems provides a wide range for projector ceiling lifts, suitable for all kind of professional or residential needs, with smart and slim, flexible and customized solutions.

Starting with the slimmest projector ceiling lift PLCV6.1, continuing with the multi modeled PLCV5 series and up to specialized items like multi positioned and long drop PLCV7.1 and heavy duty line PLCS-HD, Unitech Systems makes sure that almost all needs can be covered by one of the standard range items.



## Projector Ceiling Lifts





## Projector Wall & Furniture Lifts

Unitech Systems designs and produces special mechanisms for wall or furniture projector applications, giving architectural and designing solutions beyond ordinary.

Beside standard range products, like horizontal lift PLWHLM-V2 series or vertical swiveling lifts like PLWV-V2 series, Unitech Systems develops solutions for any bespoke application.

PLWHLM-V2



PLWV-V2



PLWV-V2HD



## Projector Hydraulic Lifts

Driven by customers' requests and needs, Unitech Systems' designing team evolves constantly its products and develops bespoke solutions.

PLT-HYDRA





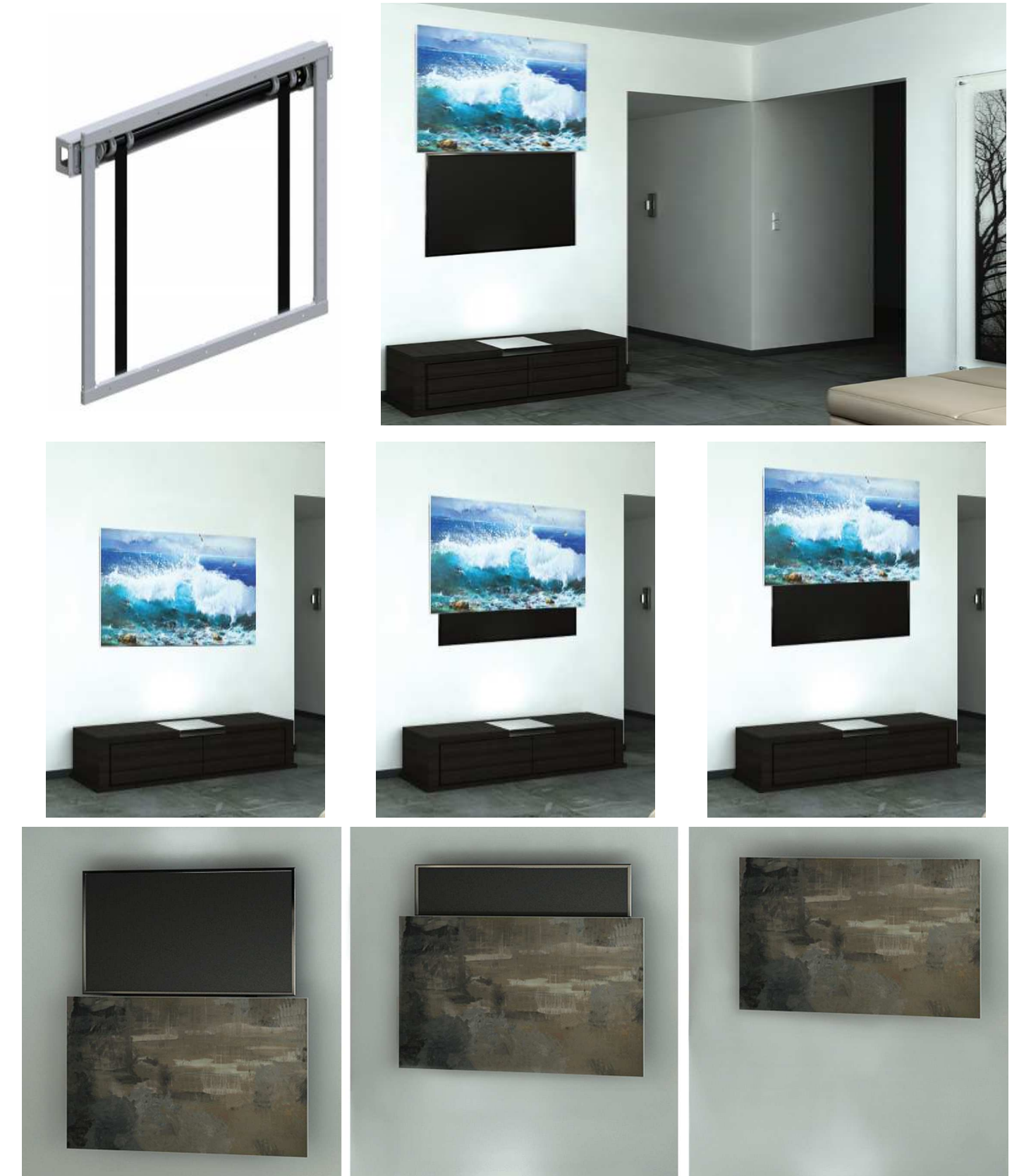
## Flat Panels Art Cover Mechanisms

Interior designers & art lovers will find in Unitech Systems' products the ideal solution for covering a TV set in the most artistic way with **FPART** series of mechanisms which uses oil print of the clients preference.



## Panel Vertical Lifts

More over, when real paintings or other art works is selected by the client, the **PA-WLV-V4** series offers easily integrated solution above or below the TV set, moving either upwards or downwards the art piece covering the TV set.





## Flat Panel Rail Mechanisms



### FPCRM V4 series

The new Rail System of FPCRM V4 series of products, designed by Unitech Systems, is an innovating flexible product that allows viewing of your flat panel TV in more than one areas of your house, while providing a minimal aesthetic result. It has been designed to meet the modern needs of home and office environment, providing features of motion in horizontal, vertical axis and rotation, electric tilt ability, in combination with a low profile aluminum rail, easy to hide or combine with other features of the ceiling.

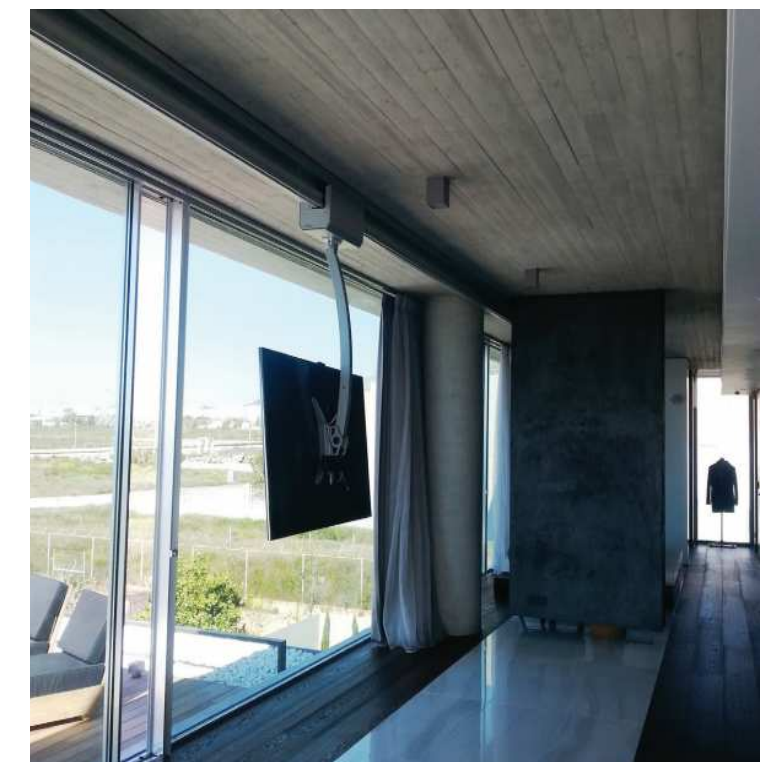
- ✓ Horizontal run length up to 12 meters, in any intermediate length desired by the client
- ✓ Manual or automated linear motion
- ✓ Manual or automated full rotation of suspended mount up to 300degrees
- ✓ Electric tilt ability
- ✓ Suspension of AV equipment by:
  - Fixed height arm mount, in five (5) standard heights from 50cm up to 100cm
  - Mounting flanges according to standard vesa or customized mounting hole patterns
- ✓ Invisible cable routing inside the aluminum ceiling rail, in cable chain
- ✓ Maximum weight of suspended equipment:
  - 50kg in fixed arm mount
  - 35kg in lift mechanism
- ✓ Elegant design
- ✓ Coloring of aluminum rail in aluminum anodized color
- ✓ Smooth motion
- ✓ Safety in application
- ✓ Easy installation
- ✓ Silent motion

### Optional features

- Coloring of aluminum rail in other anodized colors: black, cooper, inox.
- Vertical lift mechanism for maximum 35kg load with run length up to 100cm
- Customized mounts and brackets



## Flat Panel Rail Mechanisms





## Flat Panel Ceiling Lifts

### FPLC series

Specialized series of flat panel lifts series are included in Unitech Systems' constantly expanding and evolving product range.

Characterized by unique features and making smart ideas reality, the ceiling lift mechanisms of Unitech Systems guarantee that in their range you will find the right one for your needs!

Easy to install and reliable in operation, Unitech Systems' flat panel lifts provide solutions to professionals!

### FPLC - simple hinge ceiling lifts

- FPLCV4 up to 55" TV sets



## Flat Panel Ceiling Lifts

### FPLC - simple hinge ceiling lifts

FPLCV6 up to 55" TV sets

The slimmest ceiling lift, requiring just 9.5cm ceiling depth!





## Flat Panel Ceiling Lifts

### FPLC - simple hinge ceiling lifts

- FPLCV2 from 30" up to 85" TV sets

The most elegant solution, requiring inner ceiling depth from 16cm up to 22cm.



## Flat Panel Ceiling Lifts

### FPLC+R/+T hinge ceiling lifts with rotation /and tilt

- FPLCV2+R with rotation up to 75" TV sets

- FPLCV2+R+T with rotation & tilt up to 75" TV sets





## Flat Panel Ceiling Lifts

FPLC - hinge ceiling lifts with additional vertical motion  
- FPLCV3 from 40" up to 75" TV sets in black or white color



## Flat Panel Ceiling Lifts

FPLC - hinge ceiling lifts with additional vertical motion  
- FPLCV2+LM from 42" up to 100" TV sets in black or white color





## Flat Panel Ceiling Lifts

FPLC - hinge ceiling lifts with additional vertical motion & rotation

- FPLCV2+R+LM from 42" up to 90" TV sets in black or white color



## Flat Panel Vertical Wall/Ceiling Lifts

FPLW - vertical motion lifts for wall or ceiling applications





## Panel Extension Mechanism

New ideas, driven from clients' requests!

The new panel extension mechanism, **PA-WLH series**, designed by Unitech Systems, provides horizontal extension from wall or furniture surface level up to 300mm, giving the ability for your flat panel to appear from inside the wall!

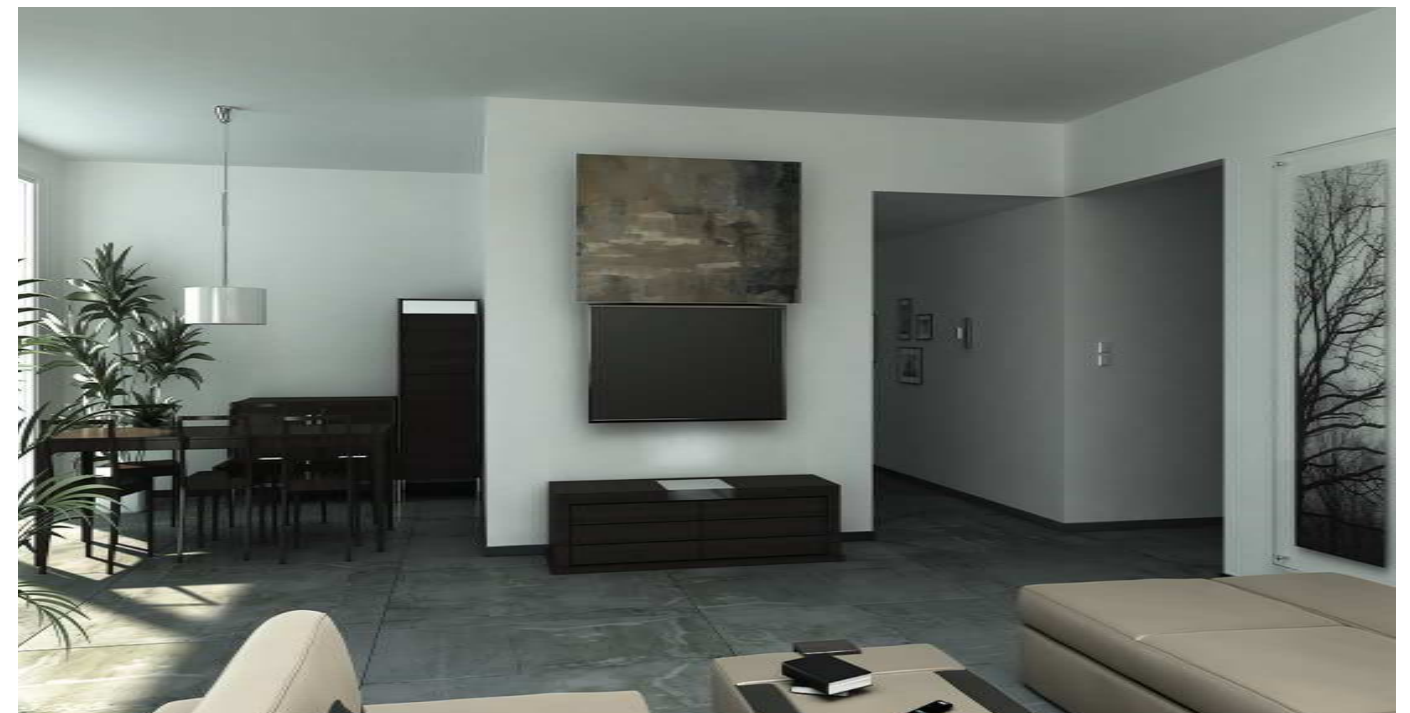
Combined with FPLTS flat panel floor/furniture lifts or with FPLTSR flat panel floor/furniture lift with side rotation, PA-WLH series provide complete disappearing of your flat panel with no compromises in their utility!



## Panel Extension Mechanism

An additional unique solution is provided by the **PA-WLH series** of mechanisms, with the addition of FPLWV1 series of lifts, hiding the TV set inside the wall and behind any art work or decoration element preferred by the client.

Limitless utility and elegance in every application!





## Flat Panel Table/Furniture Lifts

Reliable operation and easy installation are some of the features that make Unitech Systems' table/furniture/floor lifts the best choice!

Simple pop-up lifts, lifts with side-swiveling motion or center rotation ability or even upwards swiveling motion, cover a monitor size range from 25" to 100" and fulfill every residential or professional need.

**FPLT V6 - simple pop up lifts for monitors up to 30"**



## Flat Panel Table/Furniture Lifts

**FPLTS V2 - simple pop up lifts for monitors up to 75"**





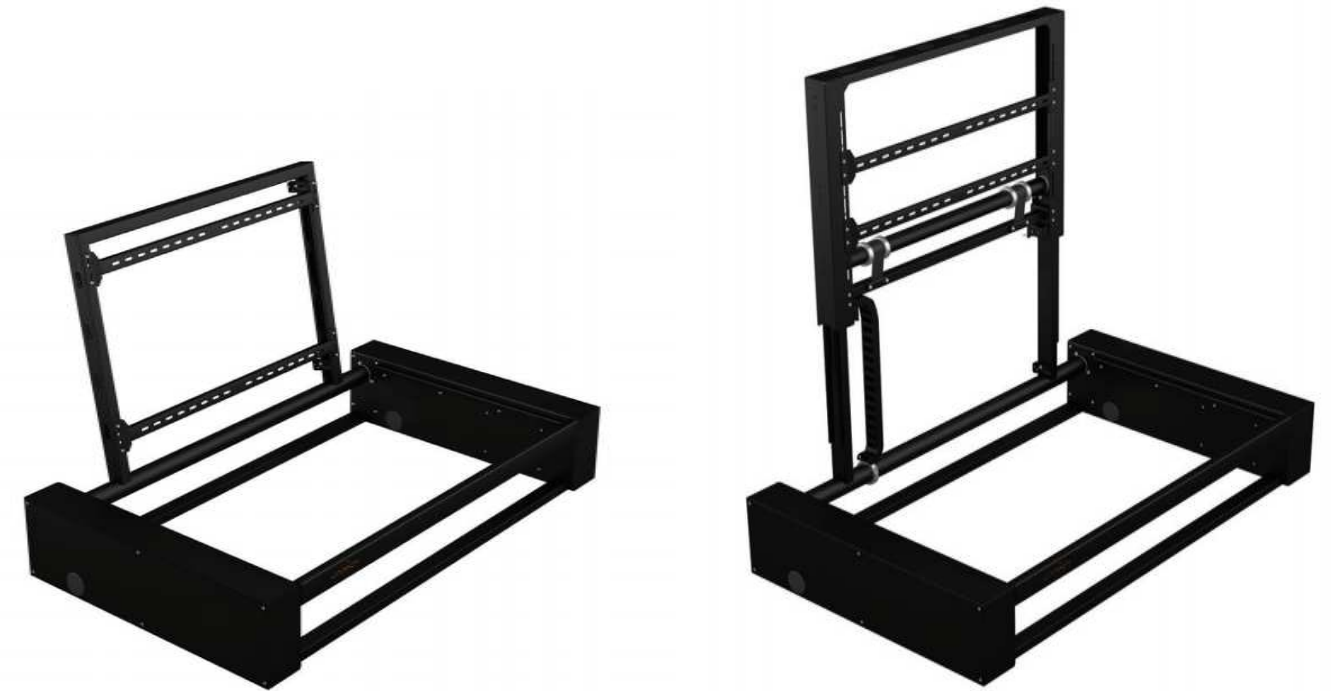
## Flat Panel Table/Furniture Lifts

FPLT-HD - simple pop up lifts for heavy duty applications up to 98"



## Flat Panel Table/Furniture Lifts

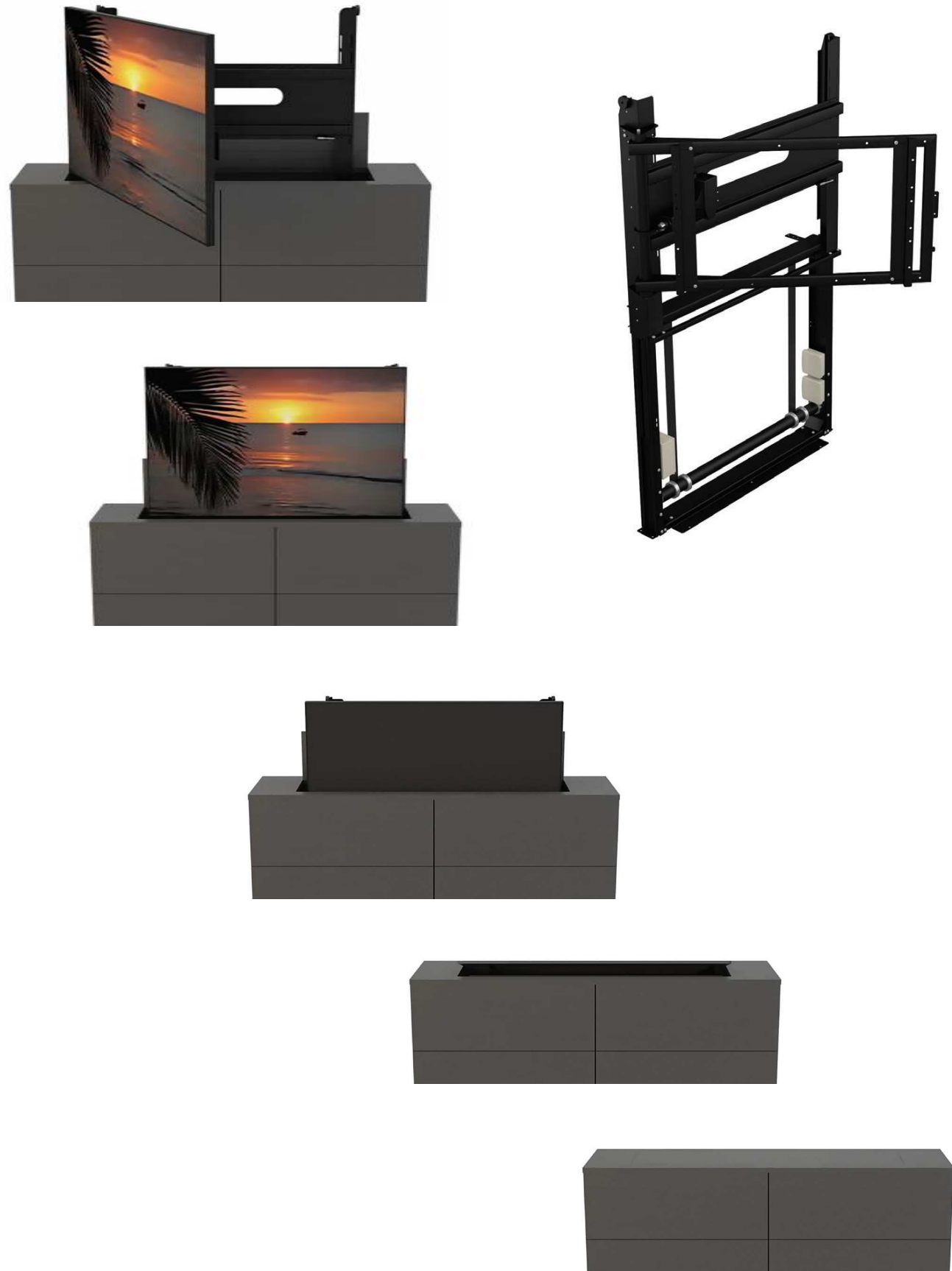
FPLT V2 - upwards swiveling motion with or without vertical elevation as well, up to 65"





## Flat Panel Table/Furniture Lifts

FPLTSR-V5 - pop up lifts with side swiveling motion, up to 65"



## Flat Panel Table/Furniture Lifts

FPLTR-V3 - pop up lifts with center axis TV rotation, up to 65"



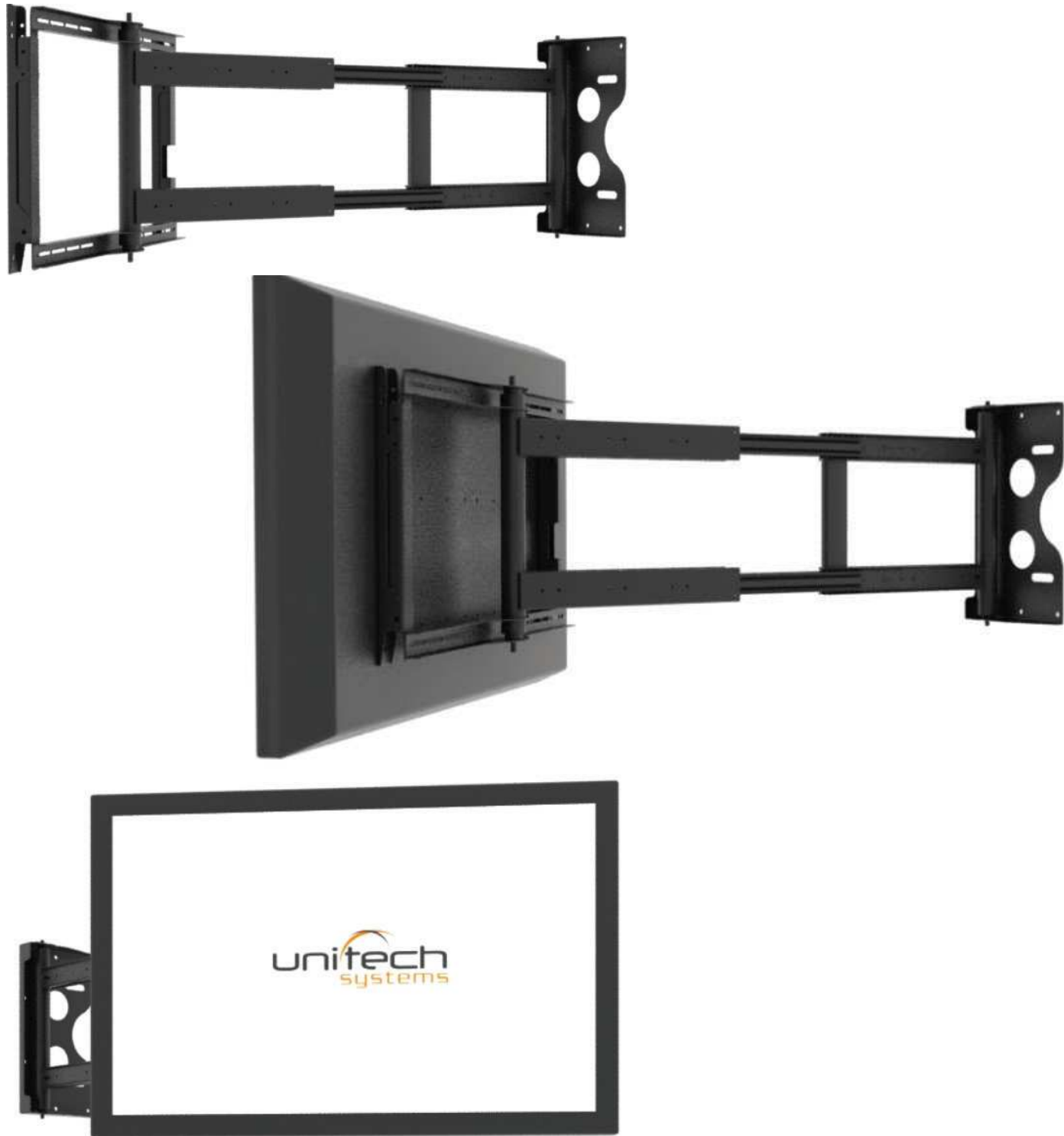


## Flat Panel Rotating Wall Mounts

### FPWMRTV1.4-400/500/600

Unique wall mounts, of extraordinary utility, suitable for TV width from 1000mm up to 2515mm, providing:

- Manual full both ways swiveling in two axis (side and center axis)
- Telescopic extension from wall from 975mm up to 1375mm



## Flat Panel Rotating Wall Mounts

### FPWMRT-UHD

Heavy duty wall mounts, for big size TVs and monitors from 70" up to 110", providing single side-axis or double axis manual swiveling motion.

Solutions for demanding applications!



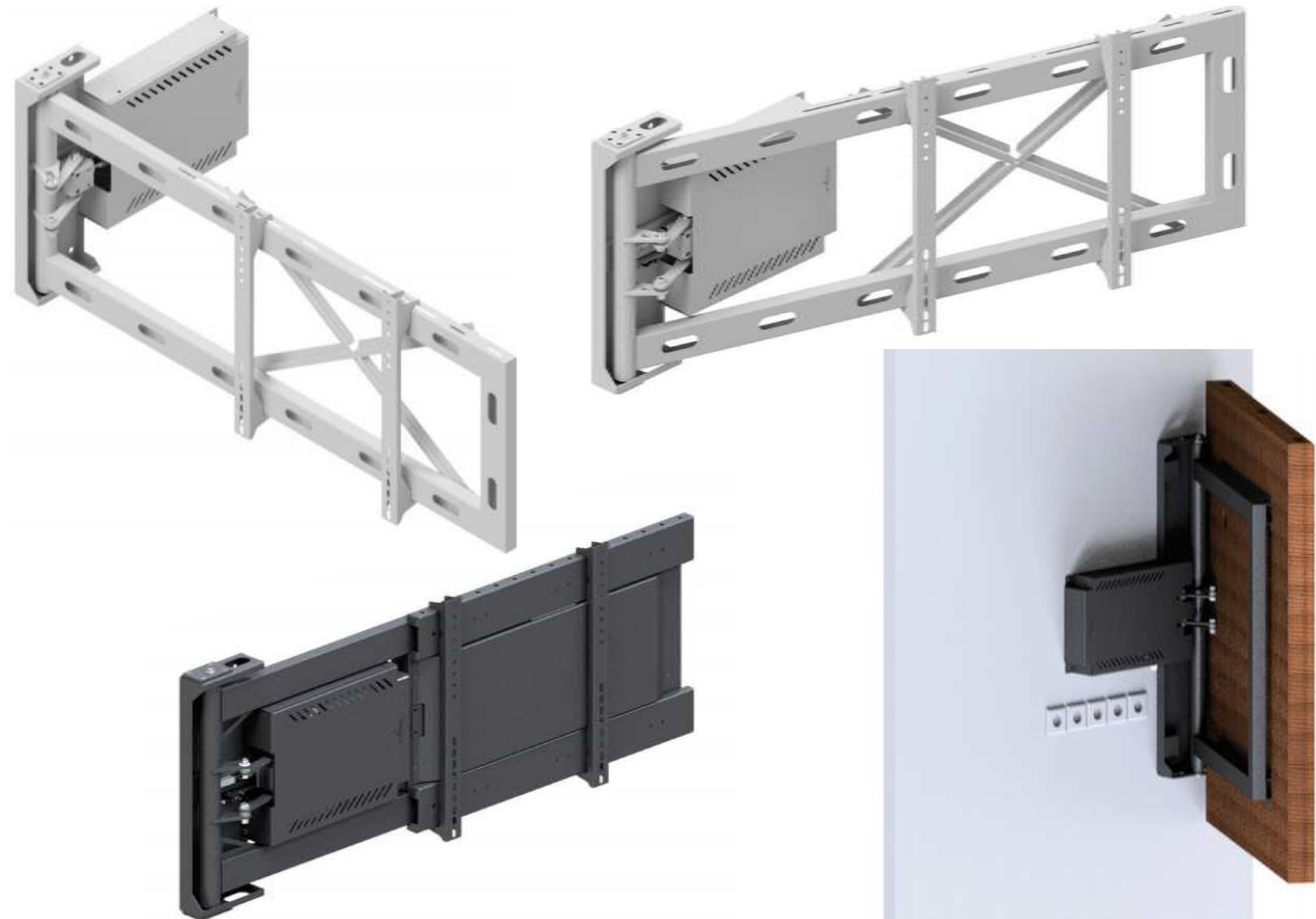
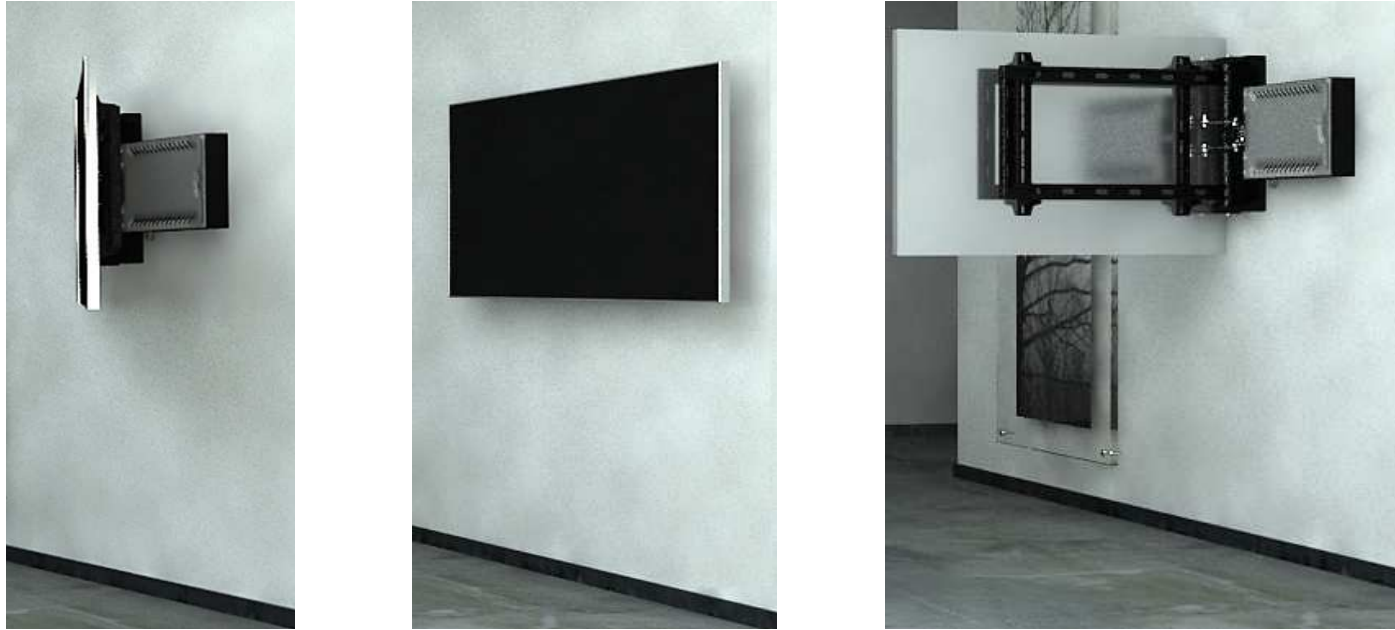


## Flat Panel Rotating Wall Mounts

### FPWMR-motorized

Wall mounts with one-way motorized swiveling motion, in two or one axis, suitable for TV sizes from 40" up to 85".

### FPWMR-MV7, FPWMR-MV10 & custom versions



## Flat Panel Rotating Wall Mounts

### FPWMR-MV8





## Flat Panel Rotating Ceiling & Table Mounts

### FPCM-ER-motorized

Ceiling mounts with motorized rotation.



### FPFMR-E motorized

Table or floor mounts with motorized rotation.



## Flat Panel Floor Stands, Totems, Infokiosks

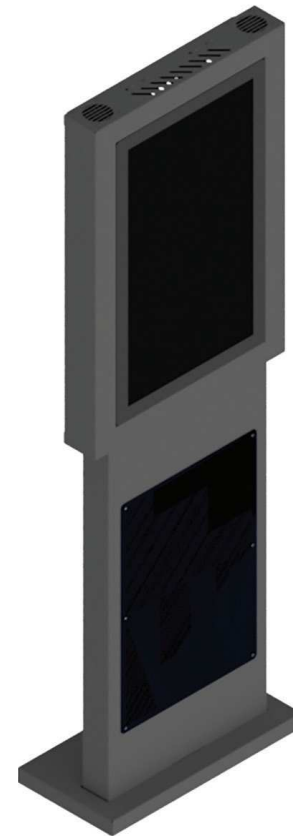
### FPFS items





## Flat Panel Floor Stands, Totems, Infokiosks

Infokiosk & Totem housings for all sizes



## Camera Ceiling & Wall Lifts

VCCL camera ceiling lifts



## Anti-Vibration 19" Racks

-The Anti-Vibration series of 19" Racks is especially designed for use in rooms with a lot of vibrations.

-The innovating design of this series, allows the firm installment of the racks, protecting at the same time the equipment mounted in them by reducing at minimum the vibrations transmitted from the rack's body to the equipment. This is achieved with the use of double rack module (box in the box) and the use of anti-shock accessories.

-The Anti Vibration features can be adjusted according to the weight of the equipment installed in the rack, providing this way the maximum resistance in vibration transmission possible.

-The Anti Vibration 19" Rack series is ideal for use in multi vibration environment, such as ships and general marine applications, automobiles, airplanes, mobile operation centers, etc, where vibrations can be destructive for sensitive equipment (e.g. servers, etc).

-Standard dimensions for this series of racks include: 15U, 27U, 32U and 42U, with depth 600 & 1000mm.

-Anti Vibration 19" Racks can be assembled in banks and can be accompanied by several accessories like doors, side covers, roof ventilation, telescopic shelves, etc.

-The doors of Anti Vibration 19" Rack series are designed in such a way so that the user can have visual contact with the inside of the racks.

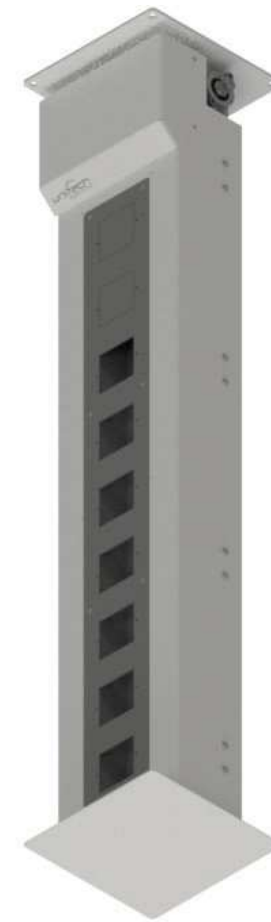
-An innovating feature of the new Anti Vibration 19" rack series, exclusively designed by Unitech Systems, is the air fans on the front door, which allow the equipment that need air flow from their front side to be adequately ventilated.

-The new Anti Vibration 19" rack is accompanied by a digital temperature controller at the front side, which displays the temperature inside the rack and has two independent signal controls that can be used for alarm, secondary ventilation system start, etc.!



## Socket Lifts & Panel-boxes

Socket Ceiling Lift & bespoke Panels & Boxes designs







design

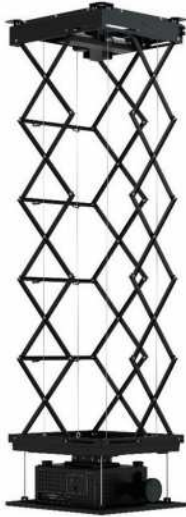


production



solution





**unitech**  
systems

+30 210 6086270

[www.unitech-systems.eu](http://www.unitech-systems.eu)